



RECYCLE



DÜNYAYI BİRLİKTE KURTARALIM

GEZSAN

PLASTİK

2022

PE GERİ DÖNÜŞÜM GRANÜL ÜRETİM FABRİKASI



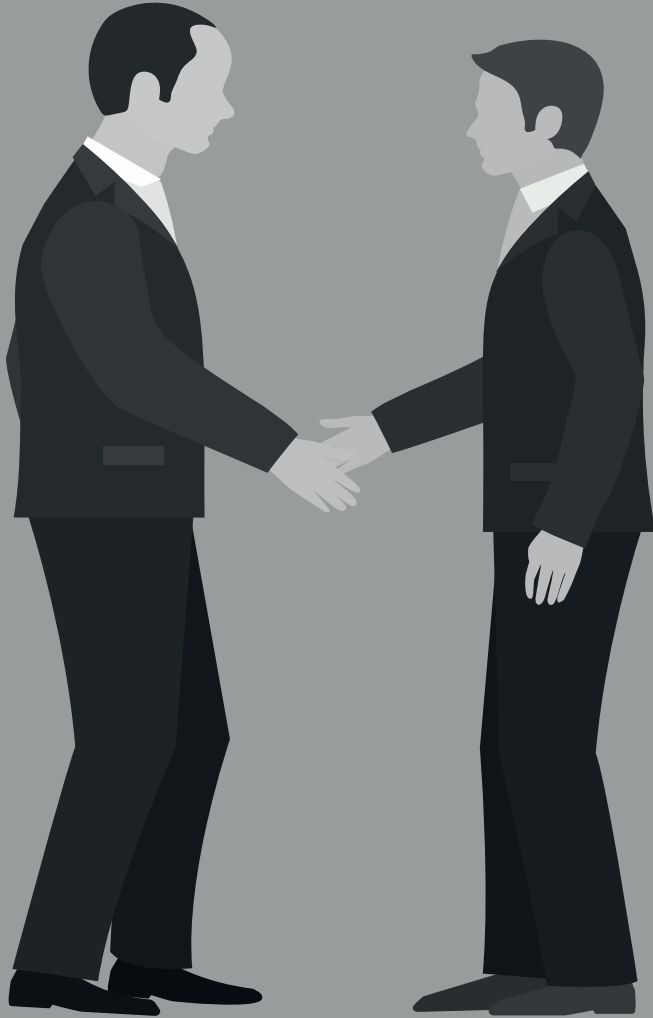
www.gezsan.com.tr



info@gezsan.com.tr



+90 850 305 59 79



HAKKIMIZDA

“Yeşil Bir Dünya İçin Geri Dönüşümlü Ürünler Kullanın”

”

Gezsan Plastik Sanayi Tic.Ltd.Şti., 2017 yılında yeni ismiyle üretime başlamış ve granül imalatında ayda 1000 ton üretim yapmaktadır. İskenderun Organize Sanayi Bölgesinde 5000 m² kapalı alan ve buna bağlı olarak yeni makina ve teçhizat yatırımlarıyla da üretimlerini ve kalitesini en iyi seviyeye yükseltmiştir.

Üretimde en ileri ve Avrupa teknolojileri kullanılmaktadır. Makine parkurumuz sürekli yenilenmektedir. Yurt içi ve yurt dışından temin edilen malzemeler ayrı ayrı çekilmekte ve gerekli laboratuvar testlerinden geçtikten sonra birinci sınıf geri dönüşüm granül hammadde üretilmektedir.

Müşteri portföyü arasında hortum, ambalaj, Çelik Boru ve Polietilen

EN İYİSİ OLMAK İÇİN VARIZ

VİZYONUMUZ

Lider , yenilikçi ve güvenilir üretici konumunu sürdürmek , müşterilerine değer katarak stratejik çözüm ortağı olmaya devam etmek.

MİSYONUMUZ

Eğitimli ve aidiyeti yüksek çalışanlarımız, güncel teknoloji ile ürettiğimiz yenilikçi ürünlerimiz, sürekliliğini sağladığımız kalitemiz, hızlı servisimiz ve odağımızdaki müşteri memnuniyeti ile bulunduğumuz sektöre yön vermek ve paydaşlarımız için sürdürülebilir değer yaratmak.

DEĞERLERİMİZ



Üretim Aşaması



01

TOPLAMA
VE
AYIKLAMA

02

KIRMA

03

AGROMEL
YAPIMI

04

EKSTRÜZYON

05

PAKETLEME
VE
LOJİSTİK



GEZ-017C HDPE
GEZ-017F LDPE



GEZ-018 LDPE
GEZ-017C LDPE



GEZ-017F LDPE
GEZ-017C LDPE



GEZ-018 HDPE
GEZ-017C LDPE


 GEZSAN
 PLASTIK

TEKNİK VERİ SAYFASI

Product Name

GEZSAN - HDPE

Commercial Name

GEZ-018

Color Option
Description
Application

Black - Yellow

GEZ-018 HDPE is a high density polyethylene compound and is available in color options**GEZ-018 HDPE** is recommended for use as a top coat in typical three layer PE (3LPE) coating application for steel pipes.**Physical Properties**

Property	Typical Value	Reference Test Method
Density (Compound)	> 930 kg/m ³	ISO 1183-1, Method A
Melt Flow Rate (190°C/2,16 kg)	>0,40g/10min	ISO 1133-1, Method B
Melt Flow Rate (190°C/5,0 kg)	>1,8 g/10min	ISO 1133-1, Method B
Tensile Strength at Break(50 mm/min) (23° C))	> 500 %	ISO 527-2
Tensile Strength at Yield(50 mm/min) (23°C)	15 MPa	ISO 527-2
Carbon Black Content	> 2 %	ISO 6964
Carbon Black Dispersion	< 3	ISO 18553
Hardness, Shore D	> 55	ISO 868
Moisture	< 500 ppm	ISO 62

Processing / Extrusion
Recommendations

GEZ-018 HDPE can be applied by flat-head die extrusion. The processing conditions mentioned below are recommendations and should be adapted to the specific extrusion equipment used. Detailed recommendations can only be made when extrusion equipment and application are known. Please contact GEZSAN PLASTIK for more information.

Barrel (cylinder) zones 180°C – 240°C**Screen (exit zone)** 210°C – 240°C**Connector zones** 210°C – 240°C**Die zones** 210°C – 240°C**Melt temperature** 210°C – 240°C



TEKNİK VERİ SAYFASI

Product Name

GEZSAN - HDPE

Commercial Name

GEZ-018**Specifications**

GEZ-018 HDPE is intended to meet the requirements of the following national and international standards when used with adhesive on powder epoxy and when the correct process, application and quality control procedures are followed by the applicator.

NF A 49710**DIN 30670****ISO 21809-1 Class B****DEP 31.40.30.31 GEN****Storage**

GEZ-018 HDPE shall be stored indoors, in dry conditions at temperatures between -10°C and +50°C, protected from UV light in. Improper storage can initiate degradation and negatively influence the physical properties of this product. Shelf life is 12 (twelve) months from the production date.

Safety

GEZ-018 HDPE is not classified as a dangerous material. Material Safety Data Sheet is available on request. Please contact **GEZSAN PLASTİK** for more information.

Packing

GEZ-018 HDPE Standard packaging 1200 – 1300 kg big bags on pallet 24 – 27 ton bulk

Disclaimer

All information contained in this document is to the best of our knowledge accurate and reliable as from the date of publication however we do not presume any liability for exactness and/or entirety of this information. All information contained in this document is obtained by test performances and trials carried out by our laboratories. **GEZSAN PLASTİK** will issue no warranties which reach beyond information contained in this document and no information contained in this document will create any warranty for any other exceptional purpose. The product mentioned in this document should not be used for healthcare, medical or pharmaceutical applications. **GEZSAN PLASTİK** cannot accept any liability in respect of handling, processing or usage of the product mentioned in this document which must be in all situations executed in accordance with all local laws and/or regulations under client's responsibility. All information contained in this document relates only to the usage of our product(s) and no liability can be accepted when used in combination with other products.


GEZSAN
PLASTIK

TEKNİK VERİ SAYFASI

Product Name

GEZSAN - LDPE

Commercial Name

GEZ-017C

Color Option

Black - Yellow

Description

GEZ-017C LDPE is a low density polyethylene compound and is available in color options

Application

GEZ-017C LDPE is recommended for use as a top coat in typical three layer PE (3LPE) coating application for steel pipes.

Physical Properties

Property	Typical Value	Reference Test Method
Density (Compound)	> 0,910 g/cm ³	ISO 1183-1, Method A
Melt Flow Rate (190°C/2,16 kg)	>0,6 g/10min	ISO 1133-1, Method B
Melt Flow Rate (190°C/5,0 kg)	>2,5 g/10min	ISO 1133-1, Method B
Tensile Strength at Break(50 mm/min) (23° C))	> 600 %	ISO 527-2
Tensile Strength at Yield(50 mm/min) (23°C)	16 MPa	ISO 527-2
Carbon Black Content	> 2 %	ISO 6964
Carbon Black Dispersion	< 3	ISO 18553
Hardness, Shore D	> 55	ISO 868
Moisture	< 500 ppm	ISO 62

Processing / Extrusion Recommendations

GEZ-017C LDPE can be applied by flat head die or cross-head die extrusion. The processing conditions mentioned below are recommendations and should be adapted to the specific extrusion equipment used. Detailed recommendations can only be made when extrusion equipment and application are known. Please contact **GEZSAN PLASTIK** for more information.

Barrel (cylinder) zones 160°C – 220°C

Screen (exit zone) 210°C – 240°C

Connector zones 210°C – 240°C

Die zones 210°C – 240°C

Melt temperature 210°C – 240°C

GEZSAN
PLASTIK

TEKNİK VERİ SAYFASI

Product Name

GEZSAN - HDPE

Commercial Name

GEZ-017C

Specifications

GEZ-017C LDPE is intended to meet the requirements of the following national and international standards when used with adhesive on powder epoxy and when the correct process, application and quality control procedures are followed by the applicator.

NF A 49710**DIN 30670****ISO 21809-1 Class B****DEP 31.40.30.31 GEN**

Storage

GEZ-017C LDPE shall be stored indoors, in dry conditions at temperatures between -10°C and +50°C, protected from UV light in. Improper storage can initiate degradation and negatively influence the physical properties of this product. Shelf life is 12 (twelve) months from the production date.

Safety

GEZ-017C LDPE is not classified as a dangerous material. Material Safety Data Sheet is available on request. Please contact **GEZSAN PLASTIK** for more information.

Packing

GEZ-018 HDPE Standard packaging 1200 – 1300 kg big bags on pallet 24 – 27 ton bulk

Disclaimer

All information contained in this document is to the best of our knowledge accurate and reliable as from the date of publication however we do not presume any liability for exactness and/or entirety of this information. All information contained in this document is obtained by test performances and trials carried out by our laboratories. **GEZSAN PLASTIK** will issue no warranties which reach beyond information contained in this document and no information contained in this document will create any warranty for any other exceptional purpose. The product mentioned in this document should not be used for healthcare, medical or pharmaceutical applications. **GEZSAN PLASTIK** cannot accept any liability in respect of handling, processing or usage of the product mentioned in this document which must be in all situations executed in accordance with all local laws and or regulations under client's responsibility. All information contained in this document relates only to the usage of our product(s) and no liability can be accepted when used in combination with other products.

GEZSAN
PLASTİK

TEKNİK VERİ SAYFASI

Product Name

GEZSAN - LDPE

Commercial Name

GEZ-017F

Color Option

Natural – Yellow – Blue – Gray - Black

Description

GEZ-017F LDPE is a low density polyethylene compound and is available in color options

Application

GEZ-017F LDPE is recommended to be used in the plastic film produced with the blown film or the flat film processes.
Usage areas: corrosion resistant work surfaces, heavy duty bags, bag, film production, drums, toys, garbage bags etc.

Physical Properties

Property	Typical Value	Reference Test Method
Density (Compound)	> 905 kg/m ³	ISO 1183-1, Method A
Melt Flow Rate (190°C/2,16 kg)	0,60 – 1,00 g/10min	ISO 1133-1, Method B
Melt Flow Rate (190°C/5,0 kg)	2,5 – 3,00 g/10min	ISO 1133-1, Method B
Tensile Strength at Break(50 mm/min) (23° C))	23 Mpa	ISO 527-2
Tensile Strength at Yield(50 mm/min) (23°C)	12 Mpa	ISO 527-2
Carbon Black Content	> 2 %	ISO 6964
Carbon Black Dispersion	< 3	ISO 18553
Hardness, Shore D	> 55	ISO 868
Moisture	< 500 ppm	ISO 62

Processing / Extrusion
Recommendations**GEZ-017F LDPE** For film extrusion applications;Typical zone temperatures **160°C – 220°C**Typical melt temperature **190°C – 210°C**Typical inflation rate **2:1 3:1**

In different extrusions, the processing conditions should be optimized according to the extruder design.

**GEZSAN**
PLASTİK**TECHNICAL DATA SHEET**

Product Name

GEZSAN - HDPE

Commercial Name

GEZ-017F**Specifications**

GEZ-017F LDPE is intended to meet the requirements of the following national and international standards when the correct process, application and quality control procedures are applied.

NF A 49710**DIN 30670****ISO 21809-1 Class B****DEP 31.40.30.31 GEN****Storage**

GEZ-017C LDPE shall be stored indoors, in dry conditions at temperatures between -10°C and +50°C, protected from UV light in. Improper storage can initiate degradation and negatively influence the physical properties of this product. Shelf life is 12 (twelve) months from the production date.

Safety

GEZ-017C LDPE is not classified as a dangerous material. Material Safety Data Sheet is available on request. Please contact **GEZSAN PLASTİK** for more information.

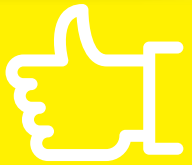
Packing

GEZ-018 HDPE Standard packaging 1200 – 1300 kg big bags on pallet 24 – 27 ton bulk

Disclaimer

All information contained in this document is to the best of our knowledge accurate and reliable as from the date of publication however we do not presume any liability for exactness and/or entirety of this information. All information contained in this document is obtained by test performances and trials carried out by our laboratories. **GEZSAN PLASTİK** will issue no warranties which reach beyond information contained in this document and no information contained in this document will create any warranty for any other exceptional purpose. The product mentioned in this document should not be used for healthcare, medical or pharmaceutical applications. **GEZSAN PLASTİK** cannot accept any liability in respect of handling, processing or usage of the product mentioned in this document which must be in all situations executed in accordance with all local laws and or regulations under client's responsibility. All information contained in this document relates only to the usage of our product(s) and no liability can be accepted when used in combination with other products.

ÇELİK BORU KAPLAMA



Bizi neden
tercih etmelisiniz?

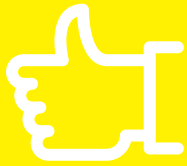
ÇELİK BORU KAPLAMA UYGUN

DÜŞÜK MALİYET

ÇEVRE DOSTU

KALİTELİ GERİDÖNÜŞÜM

REFERANS



ÇELİK BORU KAPLAMA UYGUN

REFERANS



ÇELİK BORU KAPLAMA UYGUN





**T.C.
HATAY VALİLİĞİ
Çevre Şehircilik İl Müdürlüğü**

ÇEVRE İZİN VE LİSANS BELGESİ

Belge No : 233187138.0.1
Başlangıç Tarihi : 03.01.2022
Bitiş Tarihi : 03.01.2027
Tesis Adı : GEZSAN PLASTİK SANAYİ VE TİCARET LİMİTED ŞİRKETİ
Tesis Adresi : HATAY,SARISEKİ Mahallesi, NOKSEL GİRİŞİ CADDE, No: 7-9, İSKENDERUN,Türkiye
İşletme Vergi No : 3950973987
Çevre İzin ve Lisans Konusu : Hava Emisyon
Tehlikesiz Atık Geri Kazanım,Ambalaj Atığı Geri Kazanım

Yukarıda adı ve açık adresi belirtilen tesise Çevre İzin ve Lisans Yönetmeliği kapsamında ÇEVRE İZİN VE LİSANS BELGESİ verilmiş olup 31.12.2021 tarihli ve 16822464-150/E.325 sayılı yazı ile birlikte geçerlidir. Ayrı kullanılmaz.

 e-imzalıdır
Nizamettin ÜLKER
İl Müdürü



GEZSAN

PLASTİK

RECYCLE



Bizi takip edin,
QR kodunu tarayın.



ADRES

Sarıseki Mah. Orhan Ekinci Bulvarı
İskenderun Organize Sanayi Bölgesi
No:16/1 İskenderun / HATAY / TURKEY



TELEFON

+90 850 305 59 79



E-İLETİŞİM

www.gezsan.com.tr
info@gezsan.com.tr